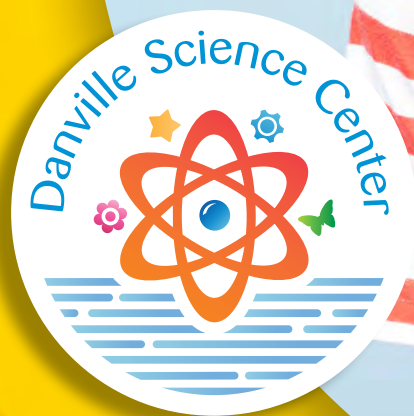


Field Trip Guide

2022-2023





Welcome to the Danville Science Center!

The Science Center is here to provide an exciting, fun and challenging experience for your next field trip. Students will get hands on to connect classroom content to the amazing world around us as they discover that STEM is part of almost every aspect of life! We have a wealth of Live Science Programs and Dome features to help your students wrap their arms around the wonders of STEM.

In this guide, you'll find options for your next field trip outlined by grade level. When you're ready to book, give us a call at 434.791.5160 ext. 203.

Don't forget that group leaders planning a visit are always admitted free, so join us early to explore our exhibit galleries before your field trip. When you visit, be sure to ask about our complimentary educator memberships.

Visit our website, dsc.smv.org, or find us on Facebook and Instagram for updates and late-breaking information about Science Center programs and events.

We look forward to your visit!

Welcome	1
Programs for Outreach	1
Recommended Itineraries by Grade Level	2
Digital Dome Theater	16
Touring Exhibitions	20
General Information	21
Explore the Store	21

Bringing the STEM to You!

Programs for Outreach

We bring the excitement of the Science Center to you! Throughout this guide, you will see programs noted with **OUTREACH**. Those programs are available to be presented offsite in the classroom. Make your reservation today!

STARLAB Portable Planetarium

The STARLAB is available as one of the Science Center's outreach programs. Discover the relationship between the Sun, Earth and Moon while exploring the planets. Explore current and upcoming space missions. Learn about repeating cycles and patterns that occur on Earth and the reasons behind those patterns as well as why we experience the change in seasons. The presentations correspond to Virginia SOLS K.10, 1.6, 1.7, 3.8, 3.11, 4.7 and 4.8.

Outreach programs are \$150 for the first program each day. Each additional program on the same day is \$75. Up to five programs can be scheduled on one day at your school. Programs are designed to serve up to 25 students per session. A mileage fee will apply for travel greater than 35 miles one way. Call 434.791.5160, ext. 201 or email our Education Coordinator at bbuchanan@smv.org.

Pre-k & K

These budding scientists are constantly investigating and absorbing the world around them! To boost their innate curiosity, these recommended programs explore basic scientific concepts and skills.



LIVE SCIENCE

RECOMMENDED ITINERARY

Each program is approximately 30 minutes and can accommodate up to 30 guests. Programs with **OUTREACH** are available to be presented offsite in the classroom.



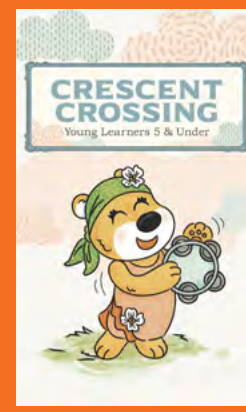
Animal Adaptations **OUTREACH**

Animals have basic needs, as well as physical and behavioral characteristics that help them survive in a variety of climates. Explore the diversity of organisms and how they adapt to their environments.



One World, One Sky

Travel with Sesame Street's Big Bird, Elmo and Hu Hu Zhu on an imaginary trip to the Moon, where they discover how different it is from Earth. Discover a brilliant spectacle of light and color as you watch the stars twinkle over Sesame Street and interact with the show.



Crescent Crossing

Connect young students to hands-on opportunities to discover concepts of the importance of science, technology, engineering and math fundamentals, such as creativity, problem solving, and cause and effect in this visually stimulating train-themed exhibition.

OTHER OPTIONS

Floating Boats

Some things in our environment sink and others float. Investigate these concepts and discover what things will and will not float. Learn how to make a boat that will float heavy objects. How much weight will it take to sink your boat?

Build a Butterfly **OUTREACH**

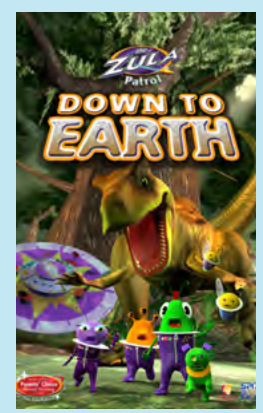
Investigate these beauties of the insect world. From metamorphosis to food sources to symmetry, these animals are a wonderful starting point for understanding life cycles, camouflage and interdependency.

Super Senses **OUTREACH**

Have you ever followed your nose to find freshly baked cookies, investigated a strange sound or shaken a package to guess what was inside? Learn about your five senses as we trick our eyes and stump our sniffers with interactive games.

Sow It – Grow It **OUTREACH**

Plants are producers, with seeds, flowers, roots, stems and leaves, which are a must for animals and people on Earth. Students sow their own seeds of learning with hands-on explorations of common plants.



Zula Patrol: Down to Earth

While on a fossil hunting expedition, the Zula Patrol turns up evidence that the villainous Deliria Delight has been traveling back in time to Earth to illegally dump her company's toxic trash. The Zula patrollers must catch her before her actions cause catastrophic consequences. Our heroes learn all about the development of the Earth and the life forms that call it home.



Earth, Moon & Sun

Earth, Moon & Sun explores the relationship among those cosmic bodies with the help of Coyote, an amusing character adapted from Native American oral traditions who has many misconceptions about our home planet. His confusion about the universe makes viewers think about how the Earth, Moon and Sun work together as a system. Includes a short live sky astronomy show.



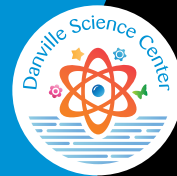
Butterfly Station and Garden

Tour our Butterfly Station and Garden to view some of nature's most beautiful creatures! Find out which type of caterpillar eats certain plants, learn the best methods to attract butterflies and get inspired to create your own butterfly garden. Available mid-April through mid-October (weather dependent).



EXHIBITS

Grade 1



RECOMMENDED ITINERARY

OTHER OPTIONS

First graders are adventurers and explorers! To unlock the secrets of science, our recommended programs explore fundamental concepts to develop an understanding of a broad range of animals, plants and their life needs.

LIVE SCIENCE

Each program is approximately 30 minutes and can accommodate up to 30 guests. Programs with **OUTREACH** are available to be presented offsite in the classroom.



Animal Adaptations **OUTREACH**

Animals have basic needs, as well as physical and behavioral characteristics that help them survive in a variety of climates. Explore the diversity of organisms and how they adapt to their environments.

Build a Butterfly **OUTREACH**

Investigate these beauties of the insect world. From metamorphosis to food sources to symmetry, these animals are a wonderful starting point for understanding life cycles, camouflage and interdependency.

Good Vibrations **OUTREACH**

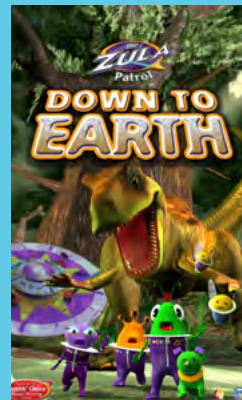
What is sound? How does sound travel and how is it measured? Make waves while learning all the news about noise.

Sow It – Grow It **OUTREACH**

Plants are producers, with seeds, flowers, roots, stems and leaves, which are a must for animals and people on Earth. Students sow their own seeds of learning with hands-on explorations of common plants.

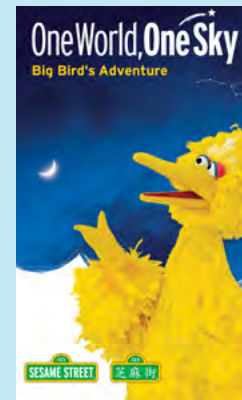


DOME



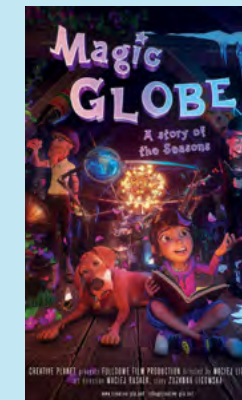
Zula Patrol: Down to Earth

While on a fossil hunting expedition, the Zula Patrol turns up evidence that the villainous Deliria Delight has been traveling back in time to Earth to illegally dump her company's toxic trash. The Zula patrollers must catch her before her actions cause catastrophic consequences. Our heroes learn all about the development of the Earth and the life forms that call it home. Includes a short live sky astronomy show.



One World, One Sky

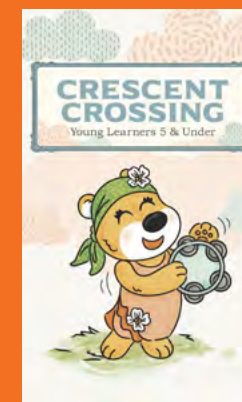
Travel with Sesame Street's Big Bird, Elmo and Hu Hu Zhu on an imaginary trip to the Moon, where they discover how different it is from Earth. Discover a brilliant spectacle of light and color as you watch the stars twinkle over Sesame Street and interact with the show.



Magic Globe: A Story of the Seasons

On vacation at her grandpa's, Mia accidentally discovers a mysterious piece of astronomical machinery. Edmund, Mia's eccentric uncle, tricks the girl into using the tool's secret powers to change the world's seasons. She quickly realizes the consequences of what they are going to do, but Edmund doesn't want to let the plan go.

EXHIBITS



Crescent Crossing

Connect young students to hands-on opportunities to discover concepts of the importance of science, technology, engineering and math fundamentals, such as creativity, problem solving, and cause and effect in this visually stimulating train-themed exhibition.



Go

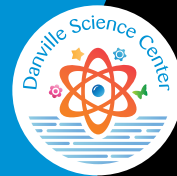
Go! highlights the intersection between the physics of machines and the biology of the human body. Test your strength with a giant lever to lift weights (or other guests); race against the clock to test reaction time; act like a hamster and turn mechanical energy into electric energy on the tread wheel; or race a migrating monarch, Usain Bolt, or a black bear on our sprint track; and more. Collaborate, compete and get ready to go!



Butterfly Station and Garden

Tour our Butterfly Station and Garden to view some of nature's most beautiful creatures! Find out which type of caterpillar eats certain plants, learn the best methods to attract butterflies and get inspired to create your own butterfly garden. Available mid-April through mid-October (weather dependent).

Grade 2



Second graders are constantly questioning their world! To help them understand the world around them, our recommended programs feature magnets, life cycles and the seasons.

LIVE SCIENCE

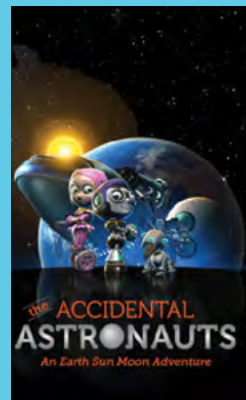
RECOMMENDED ITINERARY

Each program is approximately 30 minutes and can accommodate up to 30 guests. Programs with **OUTREACH** are available to be presented offsite in the classroom.



Opposites Attract **OUTREACH**

Discover the effects of magnets on objects while exploring attraction, repulsion and magnetic poles. Learn how magnets are used in daily life and investigate the interactions of magnets and their effects on everyday objects.



Accidental Astronauts

Follow the adventures of Cy and Annie and their dog Armstrong as they embark on an unexpected journey into space! Explore the Earth, Sun and Moon system with a wise-cracking starship computer. Follow an asteroid crash into the Moon. Get up close and personal with a solar storm and gain a new appreciation of our home. Includes a short live sky astronomy show.



Go

Go! highlights the intersection between the physics of machines and the biology of the human body. Test your strength with a giant lever to lift weights (or other guests); race against the clock to test reaction time; act like a hamster and turn mechanical energy into electric energy on the tread wheel; or race a migrating monarch, Usain Bolt, or a black bear on our sprint track; and more. Collaborate, compete and get ready to go!

OTHER OPTIONS

Animal Adaptations **OUTREACH**

Animals have basic needs, as well as physical and behavioral characteristics that help them survive in a variety of climates. Explore the diversity of organisms and how they adapt to their environments.

Build a Butterfly **OUTREACH**

Investigate these beauties of the insect world. From metamorphosis to food sources to symmetry, these animals are a wonderful starting point for understanding life cycles, camouflage and interdependency.

Fossil Finds **OUTREACH**

Learn Earth history through this fossil investigation. Dig into coastal plain sediments to discover diversity in ancient ocean environments.

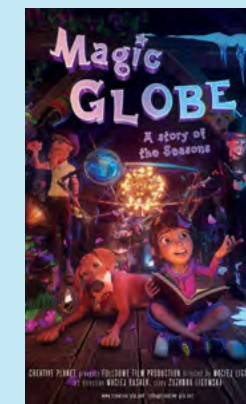
Sow It – Grow It **OUTREACH**

Plants are producers, with seeds, flowers, roots, stems, and leaves, which are a must for animals and people on Earth. Students sow their own seeds of learning with hands-on explorations of common plants.

Earth, Moon & Sun



Earth, Moon & Sun explores the relationship among those cosmic bodies with the help of Coyote, an amusing character adapted from Native American oral traditions who has many misconceptions about our home planet. His confusion about the universe makes viewers think about how the Earth, Moon and Sun work together as a system. Includes a short live sky astronomy show.



Magic Globe: A Story of the Seasons

On vacation at her grandpa's, Mia accidentally discovers a mysterious piece of astronomical machinery. Edmund, Mia's eccentric uncle, tricks the girl into using the tool's secret powers to change the world's seasons. She quickly realizes the consequences of what they are going to do, but Edmund doesn't want to let the plan go.

Butterfly Station and Garden



Tour our Butterfly Station and Garden to view some of nature's most beautiful creatures! Find out which type of caterpillar eats certain plants, learn the best methods to attract butterflies and get inspired to create your own butterfly garden. Available mid-April through mid-October (weather dependent).



©SEAN DEWITT PHOTOGRAPHY

Grade 3



RECOMMENDED ITINERARY

OTHER OPTIONS

Third graders become science explorers by conducting investigations. To help them unearth patterns and forces in the world around them, our recommended programs delve into energy transformations and soil science.

LIVE SCIENCE

Each program is approximately 30 minutes and can accommodate up to 30 guests. Programs with **OUTREACH** are available to be presented offsite in the classroom.



Simple Machines

Can simple machines make work easier? Discover how levers, pulleys and inclined planes give us a helping hand through mechanical advantage.

Simply Soil **OUTREACH**

What is the difference between soil and dirt? Separate soil into its four different sized particles and learn each component's role in supporting plant life.

The Web of Life **OUTREACH**

Visualize the dynamics of the food web. Find out how energy travels from the Sun to green plants to bugs to birds and beyond.

Water, Water Everywhere

Observe the influence of pollution on the quality of water. Watch a demonstration of the water cycle and how this process leads to cleaner drinking water. Discover how different soil types aid in the filtration of water.

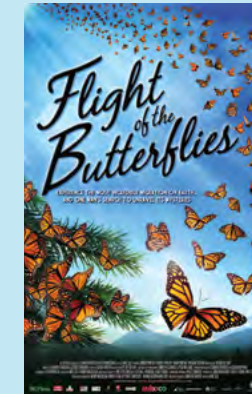


DOME



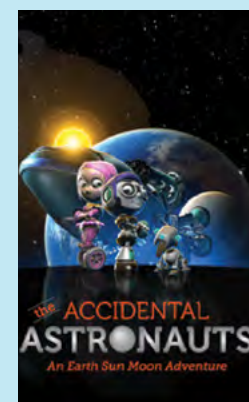
Earth, Moon & Sun

Earth, Moon & Sun explores the relationship among those cosmic bodies with the help of Coyote, an amusing character adapted from Native American oral traditions who has many misconceptions about our home planet. His confusion about the universe makes viewers think about how the Earth, Moon and Sun work together as a system. Includes a short live sky astronomy show.



Flight of the Butterflies

Migrate with hundreds of millions of monarch butterflies across North America! Immerse yourself in this compelling adventure as you discover a super generation of butterflies as they travel to a new destination. Experience firsthand the beauty of the migration cycle of butterflies spanning not only thousands of miles but several generations!



Accidental Astronauts

Follow the adventures of Cy and Annie and their dog Armstrong as they embark on an unexpected journey into space! Explore the Earth, Sun and Moon system with a wise-cracking starship computer. Follow an asteroid crash into the Moon. Get up close and personal with a solar storm and gain a new appreciation of our home. Includes a short live sky astronomy show.

EXHIBITS



Go

Go! highlights the intersection between the physics of machines and the biology of the human body. Test your strength with a giant lever to lift weights (or other guests); race against the clock to test reaction time; act like a hamster and turn mechanical energy into electric energy on the tread wheel; or race a migrating monarch, Usain Bolt, or a black bear on our sprint track; and more. Collaborate, compete and get ready to go!



Butterfly Station and Garden

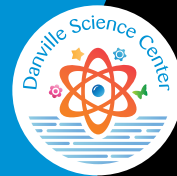
Tour our Butterfly Station and Garden to view some of nature's most beautiful creatures! Find out which type of caterpillar eats certain plants, learn the best methods to attract butterflies and get inspired to create your own butterfly garden. Available mid-April through mid-October (weather dependent).



Water

Discover history trapped in ice, experience clouds first hand, uncover life found in a droplet, plunge to the depths of the ocean, learn about water usage from a towering wall of 2,000+ water bottles, enter a room of rain and don't get wet and more. Become immersed in the importance of every drop.

Grade 4



RECOMMENDED ITINERARY

OTHER OPTIONS

Fourth graders uncover the mysteries of electricity as they dig into basic science principles. To help them explore Earth and beyond, our recommended programs focus on electricity and the solar system.

LIVE SCIENCE

Each program is approximately 30 minutes and can accommodate up to 30 guests. Programs with **OUTREACH** are available to be presented offsite in the classroom.



The Shocking Truth **OUTREACH**

Create and understand the function of different types of circuits, while investigating the types of materials that will and will not allow the flow of electricity. Conduct hands-on experiments with static and current electricity.



Perfect Little Planet

Embark on a journey with an intergalactic family searching for the ultimate vacation spot. Discover our solar system through a new set of eyes as you walk the surface of Mars, sail through the rings of Saturn and discover lightning storms on Jupiter. Dive over the ice cliffs of Miranda and fly over the surface of the dwarf planet, Pluto. Includes a short live sky astronomy show.

3...2...1...Blast Off! **OUTREACH**

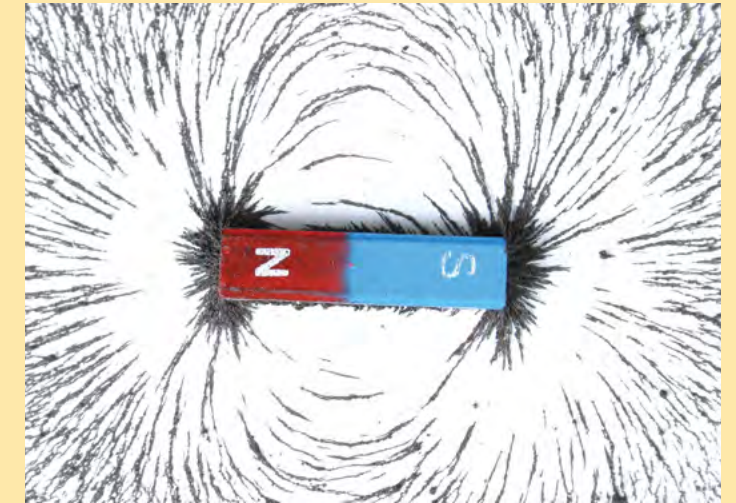
Explore potential and kinetic energy and test Newton's Laws of Motion. Students have a blast using a Newton cart to propel their understanding of force and rocket propulsion.

Opposites Attract **OUTREACH**

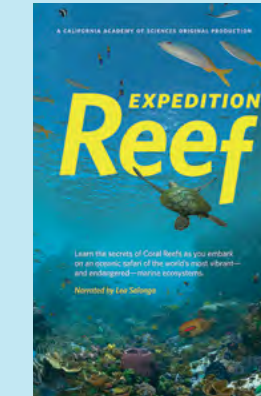
Discover the effects of magnets on objects while exploring attraction, repulsion and magnetic poles. Learn how magnets are used in daily life and investigate the interactions of magnets and electricity while constructing a simple speaker.

Extreme Weather

Explore various weather phenomena, from cloud formation and lightning, to rising seas caused by the increase in ice cap and glacier melt.



DOME



Expedition Reef

Learn the secrets of the "rainforests of the sea" as you embark on an oceanic safari of the world's most vibrant—and endangered—marine ecosystems. Along the way, discover how corals grow, feed, reproduce and support over 25 percent of all marine life on Earth, while facing unprecedented threats from climate change, habitat destruction and overfishing. Includes a short live sky astronomy show.



Superpower Dogs

Journey around the globe to meet remarkable dogs who save lives and discover the powerful bond they share with their human partners. Discover the incredible abilities of dogs and the astonishing science behind their superpowers. We'll never look at our best friends the same way again.



Go!

Go! highlights the intersection between the physics of machines and the biology of the human body. Test your strength with a giant lever to lift weights (or other guests); race against the clock to test reaction time; act like a hamster and turn mechanical energy into electric energy on the tread wheel; or race a migrating monarch, Usain Bolt, or a black bear on our sprint track; and more. Collaborate, compete and get ready to go!

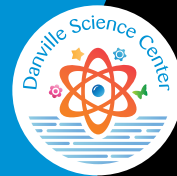


Butterfly Station and Garden

Tour our Butterfly Station and Garden to view some of nature's most beautiful creatures! Find out which type of caterpillar eats certain plants, learn the best methods to attract butterflies and get inspired to create your own butterfly garden. Available mid-April through mid-October (weather dependent).



Grade 5



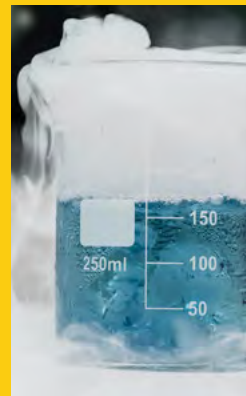
Fifth graders challenge themselves with critical thinking. To help them understand more complex science principles, our recommended programs introduce key concepts of matter and Earth Science.

LIVE SCIENCE

RECOMMENDED ITINERARY

OTHER OPTIONS

Each program is approximately 30 minutes and can accommodate up to 30 guests. Programs with **OUTREACH** are available to be presented offsite in the classroom.



The Big Chill: Cool CO₂ Science

Dry-ice experiments offer dramatic demonstrations of scientific phenomena. Examine magic bubbles, bizarre balloons and fire extinguishers. Experience states of matter and phase changes with atoms, molecules and compounds in this ultra-cool program.

Fossil Finds **OUTREACH**

Learn Earth history through this fossil investigation. Dig into coastal plain sediments to discover diversity in ancient ocean environments.

Rock 'n' Roll **OUTREACH**

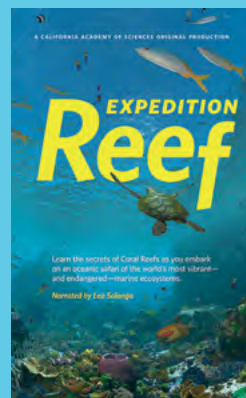
Learn about weathering, erosion, and major rock types as you explore the rock cycle. Discover rock types associated with fossils. Examine a variety of rock samples. Perform streak tests and discover surprising results. Make your own model of a metamorphic rock.

Good Vibrations **OUTREACH**

What is sound? How does sound travel, and how is it measured? Make waves while learning all the news about noise.



DOME



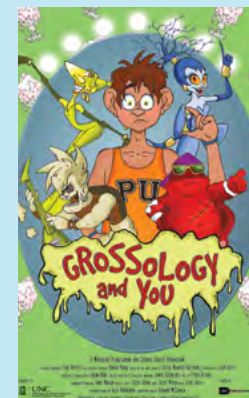
Expedition Reef

Learn the secrets of the "rainforests of the sea" as you embark on an oceanic safari of the world's most vibrant—and endangered—marine ecosystems. Along the way, discover how corals grow, feed, reproduce and support over 25 percent of all marine life on Earth, while facing unprecedented threats from climate change, habitat destruction and overfishing. Includes a short live sky astronomy show.



Dinosaurs of Antarctica

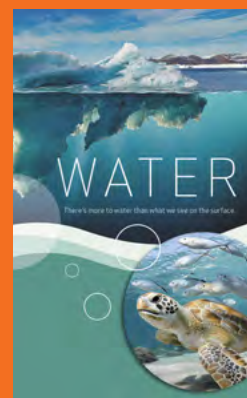
From the Permian through the Jurassic, journey to the south polar landscapes of Antarctica hundreds of millions of years ago. Join intrepid Antarctic scientists on a quest to understand the ice continent's profound transformation and to predict the future as humans drive dramatic change. Welcome to the lost prehistoric world of Gondwana. Welcome to Antarctica.



Grossology & You

Join Noreen Neuron, host of the *Personal Universe* game show, as she leads us through a competition to decide which body system is the best and brightest. Will it be Scabby (the immune system), Boogie (the respiratory system) or Flatus (the digestive system)? Laugh and learn as these animated characters explore the inner workings of the human body! Includes a short live sky planetarium show.

EXHIBITS



Water

Discover history trapped in ice, experience clouds first hand, uncover life found in a droplet, plunge to the depths of the ocean, learn about water usage from a towering wall of 2,000+ water bottles, enter a room of rain and don't get wet and more. Become immersed in the importance of every drop.



Butterfly Station and Garden

Tour our Butterfly Station and Garden to view some of nature's most beautiful creatures! Find out which type of caterpillar eats certain plants, learn the best methods to attract butterflies and get inspired to create your own butterfly garden. Available mid-April through mid-October (weather dependent).



Go

Go! highlights the intersection between the physics of machines and the biology of the human body. Test your strength with a giant lever to lift weights (or other guests); race against the clock to test reaction time; act like a hamster and turn mechanical energy into electric energy on the tread wheel; or race a migrating monarch, Usain Bolt, or a black bear on our sprint track; and more. Collaborate, compete and get ready to go!



Grade 6



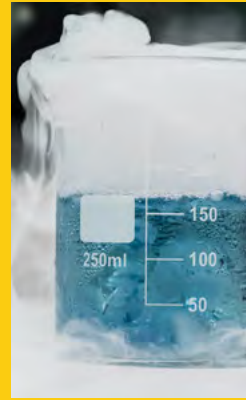
Sixth graders are all about change – focusing on energy and ecology. To help them better understand the constant changes in our world, our recommended programs uncover changes in matter and in the solar system.

LIVE SCIENCE

RECOMMENDED ITINERARY

OTHER OPTIONS

Each program is approximately 30 minutes and can accommodate up to 30 guests. Programs with **OUTREACH** are available to be presented offsite in the classroom.



The Big Chill: Cool CO₂ Science

Dry-ice experiments offer dramatic demonstrations of scientific phenomena. Examine magic bubbles, bizarre balloons and fire extinguishers. Experience states of matter and phase changes with atoms, molecules and compounds in this ultra-cool program.

3...2...1...Blast Off! **OUTREACH**

Explore potential and kinetic energy and test Newton's Laws of Motion. Students have a blast using a Newton cart to propel their understanding of force and rocket propulsion.

Riverside Science

Learn about our local ecosystem and watershed directly from the Dan River. Walk down by the river for a firsthand lesson in ecology. Conduct water quality monitoring of samples collected from the river and then continue to reinforce concepts learned through a follow-up activity in the classroom.

Extreme Weather

Explore various weather phenomena, from cloud formation and lightning, to rising seas caused by the increase in ice cap and glacier melt.



DOME



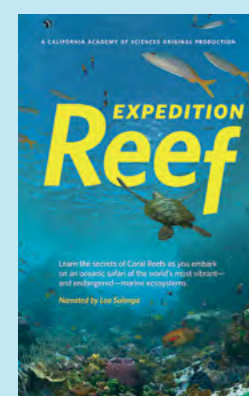
Dinosaurs of Antarctica

From the Permian through the Jurassic, journey to the south polar landscapes of Antarctica hundreds of millions of years ago. Join intrepid Antarctic scientists on a quest to understand the ice continent's profound transformation and to predict the future as humans drive dramatic change. Welcome to the lost prehistoric world of Gondwana. Welcome to Antarctica.



Superpower Dogs

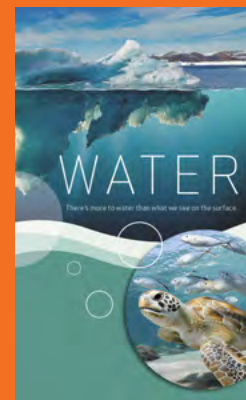
Journey around the globe to meet remarkable dogs who save lives and discover the powerful bond they share with their human partners. Discover the incredible abilities of dogs and the astonishing science behind their superpowers. We'll never look at our best friends the same way again.



Expedition Reef

Learn the secrets of the "rainforests of the sea" as you embark on an oceanic safari of the world's most vibrant—and endangered—marine ecosystems. Along the way, discover how corals grow, feed, reproduce and support over 25 percent of all marine life on Earth, while facing unprecedented threats from climate change, habitat destruction and overfishing. Includes a short live sky astronomy show.

EXHIBITS



Water

Discover history trapped in ice, experience clouds first hand, uncover life found in a droplet, plunge to the depths of the ocean, learn about water usage from a towering wall of 2,000+ water bottles, enter a room of rain and don't get wet and more. Become immersed in the importance of every drop.



Butterfly Station and Garden

Tour our Butterfly Station and Garden to view some of nature's most beautiful creatures! Find out which type of caterpillar eats certain plants, learn the best methods to attract butterflies and get inspired to create your own butterfly garden. Available mid-April through mid-October (weather dependent).



Go

Go! highlights the intersection between the physics of machines and the biology of the human body. Test your strength with a giant lever to lift weights (or other guests); race against the clock to test reaction time; act like a hamster and turn mechanical energy into electric energy on the tread wheel; or race a migrating monarch, Usain Bolt, or a black bear on our sprint track; and more. Collaborate, compete and get ready to go!

The background of the entire page is a vibrant space scene. In the upper left, a large Jupiter with its characteristic bands is prominent. To its right is a large, detailed Moon. Below Jupiter, Saturn's rings are visible. In the lower left, a portion of Earth is shown. The background is filled with stars and a nebula. The foreground shows the interior of a dome theater with rows of dark seats and metal railings. The floor is illuminated with a red glow.

Digital Dome Theater

The Digital Dome Theater illuminates the universe with stunning clarity and brilliance on a gigantic 40-foot screen. With new Dome features added regularly to the Science Center's show offerings, adventurers of all ages are in for a treat! Transport back in time, fly on the backs of pterosaurs and take a wild ride through the solar system with these dynamic new shows. Shows range from 30 to 45 minutes and seating is limited to 95 per show. Ask about our special show times for groups of 25 or more.

Digital Dome Theater



Accidental Astronauts

Recommended for grades 2 – 5
32 minutes

Follow the adventures of Cy and Annie and their dog Armstrong as they embark on an unexpected journey into space! Explore the Earth, Sun and Moon system with a wise-cracking starship computer. Follow an asteroid as it crashes into the Moon. Get up close and personal with a solar storm and gain a new appreciation of our home.



Cosmic Journey: A Solar System Adventure

Recommended for grades 6 & up
23 minutes

Take a voyage to the outer reaches of our solar system in search of worlds that might support life. See volcanoes tower 80,000 feet above a barren surface and experience monstrous hurricanes and multicolored rings suspended in air. Enjoy the wonders of the planets and their moons as you

travel faster than the speed of light! Includes a short live sky astronomy show.



Dinosaurs of Antarctica

Recommended for grades 4 & up
42 minutes

From the Permian through the Jurassic, journey to the south polar landscapes of Antarctica hundreds of millions of years ago. Enter a surreal world of bug-eyed giants and egg-laying mammals, where survival means enduring the sunless, six-month polar winter surrounded by meat-eaters with night vision. Join intrepid Antarctic

scientists on a quest to understand the ice continent's profound transformation and to predict the future as humans drive dramatic change. Welcome to the lost prehistoric world of Gondwana. Welcome to Antarctica.

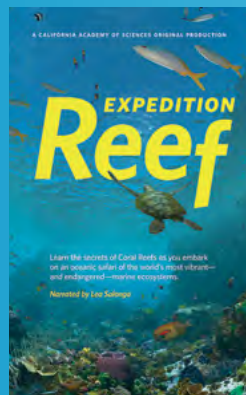


Earth, Moon & Sun

Recommended for grades Pre-K – 5
29 minutes

Earth, Moon & Sun explores the relationship among those cosmic bodies with the help of Coyote, an amusing character adapted from Native American oral traditions who has many misconceptions about our home planet and its most familiar neighbors. His confusion about the universe makes viewers think about how the Earth,

Moon and Sun work together as a system. Native American stories are used throughout the show to help distinguish between myths and science.



Expedition Reef

Recommended for grades 4 & up
26 minutes

Learn the secrets of the “rainforests of the sea” as you embark on an oceanic safari of the world’s most vibrant—and endangered—marine ecosystems. Along the way, discover how corals grow, feed, reproduce and support over 25 percent of all marine life on Earth, while facing unprecedented threats from climate change, habit destruction

and overfishing. “This is a difficult story [and] a turning point for reefs,” says Academy scientist and reef expert Dr. Rebecca Albright, “but it’s not too late.”



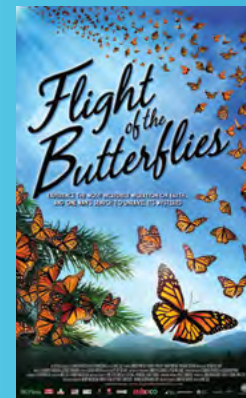
Flying Monsters*

Recommended for grades 4 & up
39 minutes

Join David Attenborough, the world’s leading naturalist, as he sets out to uncover the truth about the enigmatic pterosaur, a prehistoric flying creature with wingspan of up to 40 feet. Attenborough joins forces with other scientists working to better understand the incredible journey of the evolution of the pterosaurs, a story that unfolds

in such stunning locations as New Mexico, the Jurassic Coast of Lyme Regis in Britain, an ancient pterosaur landing site in Southern France and a fossil pit in Germany where near perfect pterosaur specimens have been uncovered.

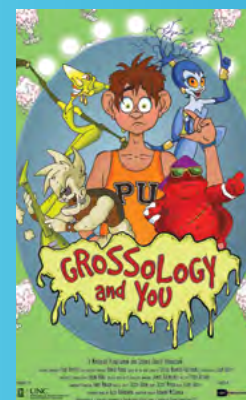
*Available through Jan. 12



Flight of the Butterflies

Recommended for grades 3 & up
44 minutes

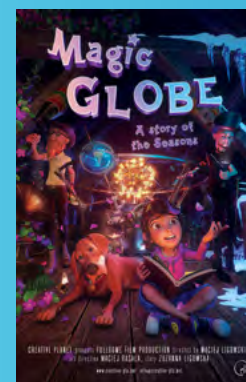
Migrate with hundreds of millions of monarch butterflies across North America! Immerse yourself in this compelling adventure as you discover a super generation of butterflies as they travel to a new destination. Experience firsthand the beauty of the migration cycle of butterflies spanning not only thousands of miles but several generations!



Grossology & You

Recommended for grades 4 & up
27 minutes

Join Noreen Neuron, host of the *Personal Universe* game show, as she leads us through a competition to decide which body system is the best and brightest. Will it be Scabby (the immune system), Boogie (the respiratory system), or Flatus (the digestive system)? Laugh and learn as these animated characters explore the inner workings of the human body.



Magic Globe: A Story of the Seasons

Recommended for grades 1 – 5
37 minutes

On vacation at her grandpa’s, Mia accidentally discovers a mysterious piece of astronomical machinery. Edmund, Mia’s eccentric uncle, tricks the girl into using the tool’s secret powers to change the world’s seasons. She quickly realizes the consequences

of what they are going to do, but Edmund doesn’t want to let the plan go.



One World, One Sky

Recommended for grades Pre-K – 1
30 minutes

Travel with Sesame Street’s Big Bird, Elmo and Hu Hu Zhu on an imaginary trip to the Moon, where they discover how different it is from Earth. Discover a brilliant spectacle of light and color as you watch the stars twinkle over Sesame Street and interact with the show.



Perfect Little Planet

Recommended for grades 3 – 6
38 minutes

Embark on a journey with an intergalactic family searching for the ultimate vacation spot. Discover our solar system through a new set of eyes as you walk the surface of Mars, sail through the rings of Saturn and discover lightning storms on Jupiter. Dive over the ice cliffs of Miranda and fly over the surface of the dwarf planet, Pluto.



Superpower Dogs

Recommended for grades 3 & up
44 minutes

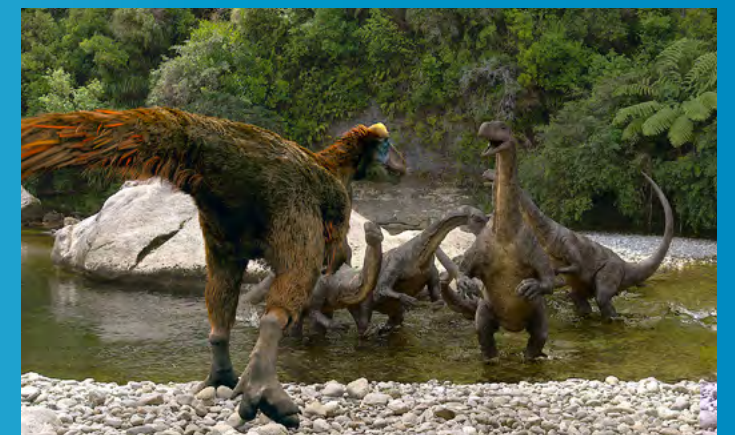
Journey around the globe to meet remarkable dogs who save lives and discover the powerful bond they share with their human partners. Discover the incredible abilities of dogs and the astonishing science behind their superpowers. We’ll never look at our best friends the same way again.



Zula Patrol: Down to Earth

Recommended for grades Pre-K – 2
24 minutes

While on a routine fossil hunting expedition, The Zula Patrol turns up evidence that the villainous Deliria Delight has been traveling back in time to Earth’s prehistoric past to illegally dump her company’s toxic trash. The Zula patrollers must find and catch her before her actions cause catastrophic consequences. In the process, our heroes learn all about the formation and development of Earth and the life forms that call it home.



Dinosaurs of Antarctica

Touring Exhibitions

DESIGN
ZONE

September 17, 2022 -January 2, 2023

Design is everywhere we look and in everything we do. Get behind the scenes and create your own skate park, dance beat, rollercoaster and more.

Design Zone was produced and is toured by the Oregon Museum of Science and Industry. This exhibit was made possible by a National Science Foundation (NSF) grant.

Hands-On
HARLEY-DAVIDSON

January 9-May 15, 2023

STEM education and the wind in your face! This educational touring exhibition illustrates STEM concepts through a one-of-a-kind guest experience that lets kids Dream It! Build It! ... and Ride It!

National tour sponsored by

Hands-On Harley-Davidson™ was created by the Betty Brinn Children's Museum in collaboration with Harley-Davidson Motor Company. Hands-On Harley-Davidson and Harley-Davidson® are trademarks of H-D and are used with permission. © 2013 H-D. All rights reserved.

Make the Most of Your Visit

Hours of Operation:
Labor Day-Memorial Day:
Wednesday – Saturday, 9:30 a.m. – 5 p.m.

Memorial Day-Labor Day:
Tuesday – Saturday, 9:30 a.m. – 5 p.m.
Sunday, 11:30 a.m. – 5 p.m.

Closed: November 25, December 24 and 25

Danville Science Center is located at:
677 Craghead Street Danville, VA 24541

Contact us:
434.791.5160 ext. 203 or dscgs@smv.org
dsc.smv.org

Group Admission Fees
For groups of 10 or more.

Exhibits + Digital Dome.....	\$8
Exhibits + Activity	\$8
Exhibits + Digital Dome + Activity	\$10

To ensure all our guests have the best experience possible, we suggest one adult chaperone for every 10 youth. School personnel are admitted free during a group visit. Additional parent/adult chaperones are \$5 each. Call 434.791.5160 ext. 203 to start your journey today!

Since groups enjoy a discounted admission fee and exclusive programs, individual membership passes and other discounts and coupons are not valid toward group admission fees.

Trip Tips

- If the number of students and chaperones has changed by more than five persons since booking the visit, please call at least three days in advance to update your numbers.
- When possible, collect chaperone admission prior to your visit to make the payment and check-in process smoother.
- If bringing bagged lunches, have lunch bags together in boxes or totes to make unloading from buses easier.
- If you need to purchase lunches, please contact the vendors below directly.

434.791.3166

434.836.7970



Science Central



Science Station

Please visit dsc.smv.org to read our operating policies.

Explore the Store!

Take a bit of the Science Center experience with you. The gift shop features a wide variety of science books, projects, games, and toys carefully selected to engage students in thinking about and exploring science.

Souvenir bags can be pre-packaged for students. Containing some of our most popular items, these bags can be assembled in a price range of \$2 to \$10 each. Please call 434.791.5160, ext. 203 at least one week in advance of your group's visit to order the bags.

